

PYD
ELECTROBOMBAS

BOMBAS DE ACHIQUE

DRAIN PUMPS • POMPES DE VIDANGE

SERIE XKS-P/PW



XKS serie P



XKS serie PW

SERIE XKS-P/PW

Bomba de drenaje para uso doméstico, de construcción robusta y provista de retenes de estanqueidad. Indicada para el vaciado de estanques, pozos, depósitos, piscinas, etc. Completamente de material anticorrosivo; Boquilla de impulsión roscada

Drain pump for home use, robust and provided with seal rings construction. Suitable for emptying ponds, wells, reservoirs, pools, etc. Strongly corrosive material; Threaded drive nozzle.

Pompe de vidange pour un usage domestique, robuste et muni d'anneaux d'étanchéité construction. Convient pour vider les étangs, les puits, les réservoirs, piscines, etc. Matériau fortement corrosive; Buse filetée d'entraînement.



XKS serie P



XKS serie PW

Materiales

Cuerpo aspiración	PP
Cuerpo impulsión	PP
Impulsor	PP
Difusor	PP
Eje rotor	INOX 304
Envolvente	PP
Cierre mecánico	Retén
Rejilla aspiración	PP
Tornillería	INOX 304

Rango de trabajo

Protección	IP 68
Aislamiento	Clase F
Inmersión máx.	5 m
Temperatura	35°C
Fluidos	Agua turbia

Materials

Inlet body	PP
Outlet body	PP
Impeller	PP
Diffuser	PP
Rotor shaft	INOX 304
External casing	PP
Mechanical seal	Locker
Suction grid	PP
Screws	INOX 304

Working range

Protection	IP 68
Isolation	Class F
Immersion	5 m
Temperature	35°C
Fluids	Turbied water

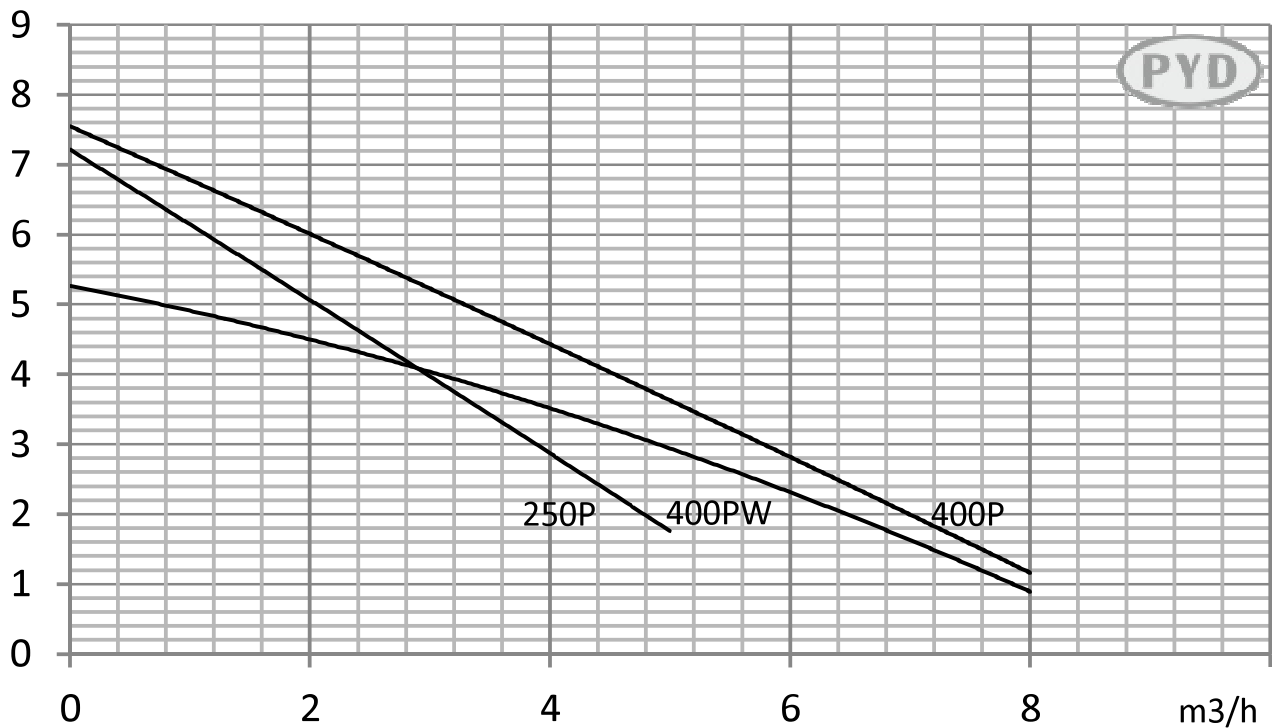
Matériels

Corps d'aspir.	PP
Corps d'impuls.	PP
Roue	PP
Diffuseur	PP
Arbre	INOX 304
Enveloppe	PP
Garniture méc.	Bloquer
Gille	PP
Vis	INOX 304

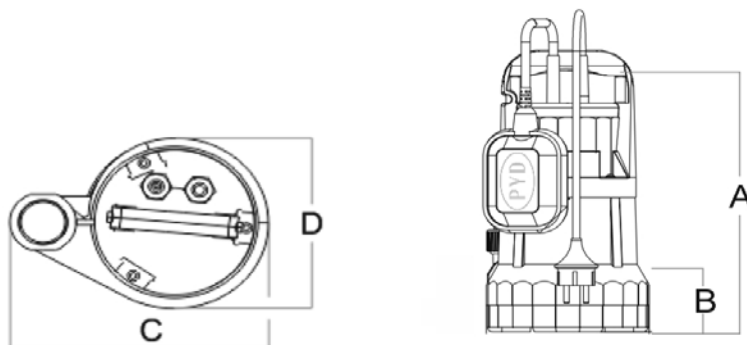
Plage de travail

Protection	IP 68
Isolement	Classe F
Immersion	5 m
Température	35°C
Fluides	Eau trouble

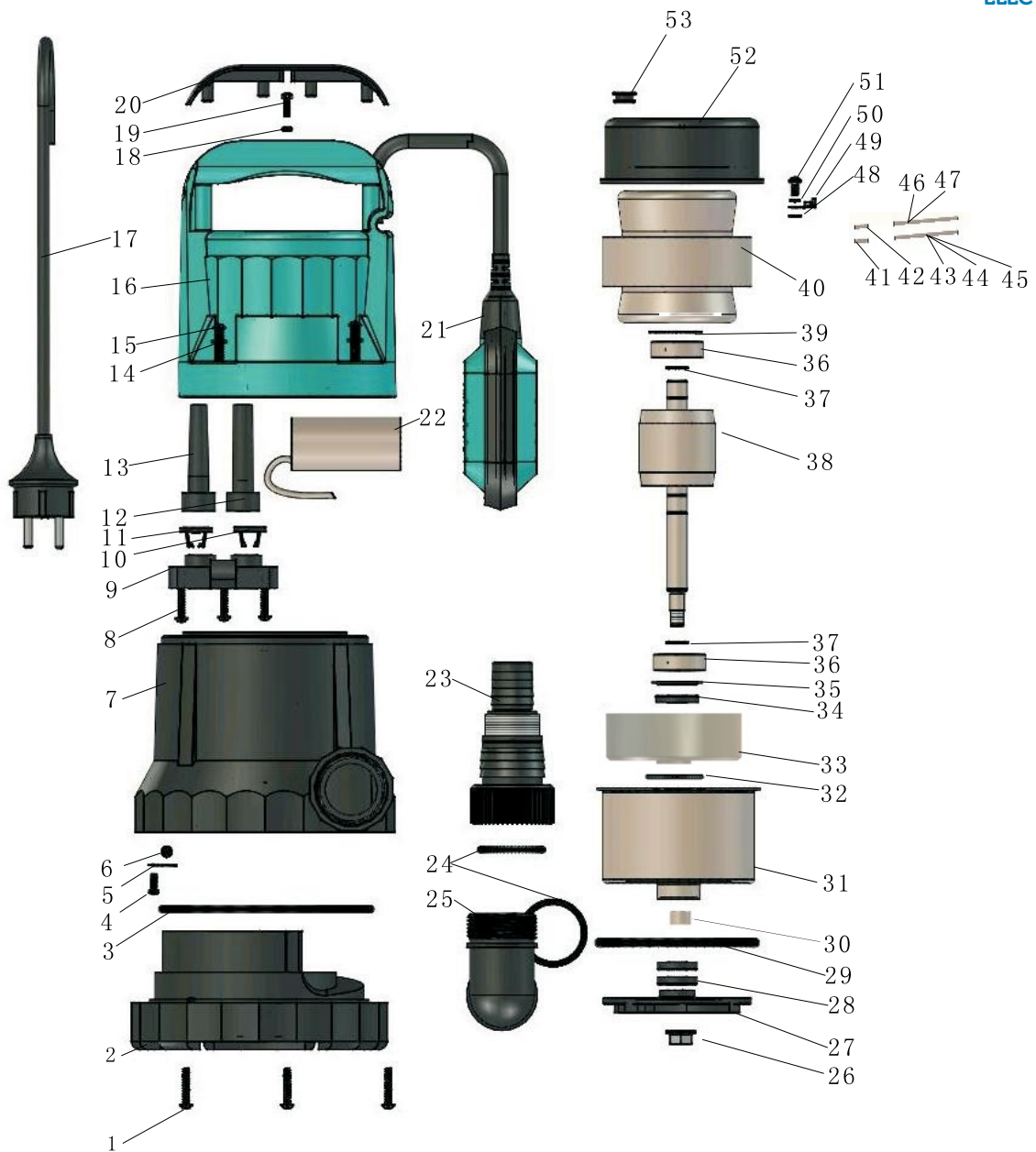
CURVAS Y PUNTOS DE SERVICIO



MODELO MODEL MODÈLE	DN (Ø")	SÓLIDOS SOLIDS SOLIDES [mm]	INTENSIDAD [A] CURRENT [A] INTENSITÉ [A]		POTENCIA POWER PUISSANCE		CONDENSADOR CAPACITOR CONDENSATEUR µF	PESO WEIGHT POID Kg
			1~220V	3~400V	KW [P ₂]	Hp [P ₂]		
XKS-250P	1	5	1,1	-	0,25	0,30	6	3
XKS-400P	1	5	1,7	-	0,37	0,50	8	3
XKS-400PW	1	35	1,7	-	0,37	0,50	8	3



MODELO MODEL MODÈLE	DN (Ø")	A [mm]	B [mm]	C [mm]	D [mm]	PESO WEIGHT POID Kg
XKS-250P	1	301	55	213	158	3
XKS-400P	1	301	55	213	158	3
XKS-400PW	1	301	55	213	158	3



No.	Description	No.	Description	No.	Description	No.	Description
1	Screw	14	Screw	27	Impeller	40	Motor stator
2	Base	15	Flat washer	28	Rubber covered rotary lip seals	41	Lug plate (small)
3	O_ring	16	Cover	29	O_ring	42	Fibreglass pipe
4	Screw	17	Cable	30	Oil	43	Lug plate (big)
5	Supporting plate	18	O_ring	31	Stator cover	44	Fibreglass pipe
6	Steel ball	19	Screw	32	O_ring	45	Pyrocondensated pipe
7	Pump body	20	Handle liner	33	Bearing base	46	Pyrocondensated pipe
8	Screw	21	Float switch	34	Rubber covered rotary lip seals	47	Wire
9	Capacitor fixing	22	Capacitor	35	Adjusting washer	48	Serrated lock washer
10	Cable clamp	23	Transit nut	36	Bearing	49	Cold compacting
11	Cable clamp	24	O_ring	37	Circlip for shaft	50	Spring washer
12	Cable jacket	25	Outlet adapter	38	Rotor	51	Screw
13	Cable jacket	26	Hexagon flange nut	39	Wave spring	52	Upper cover
						53	Outlet mouth

